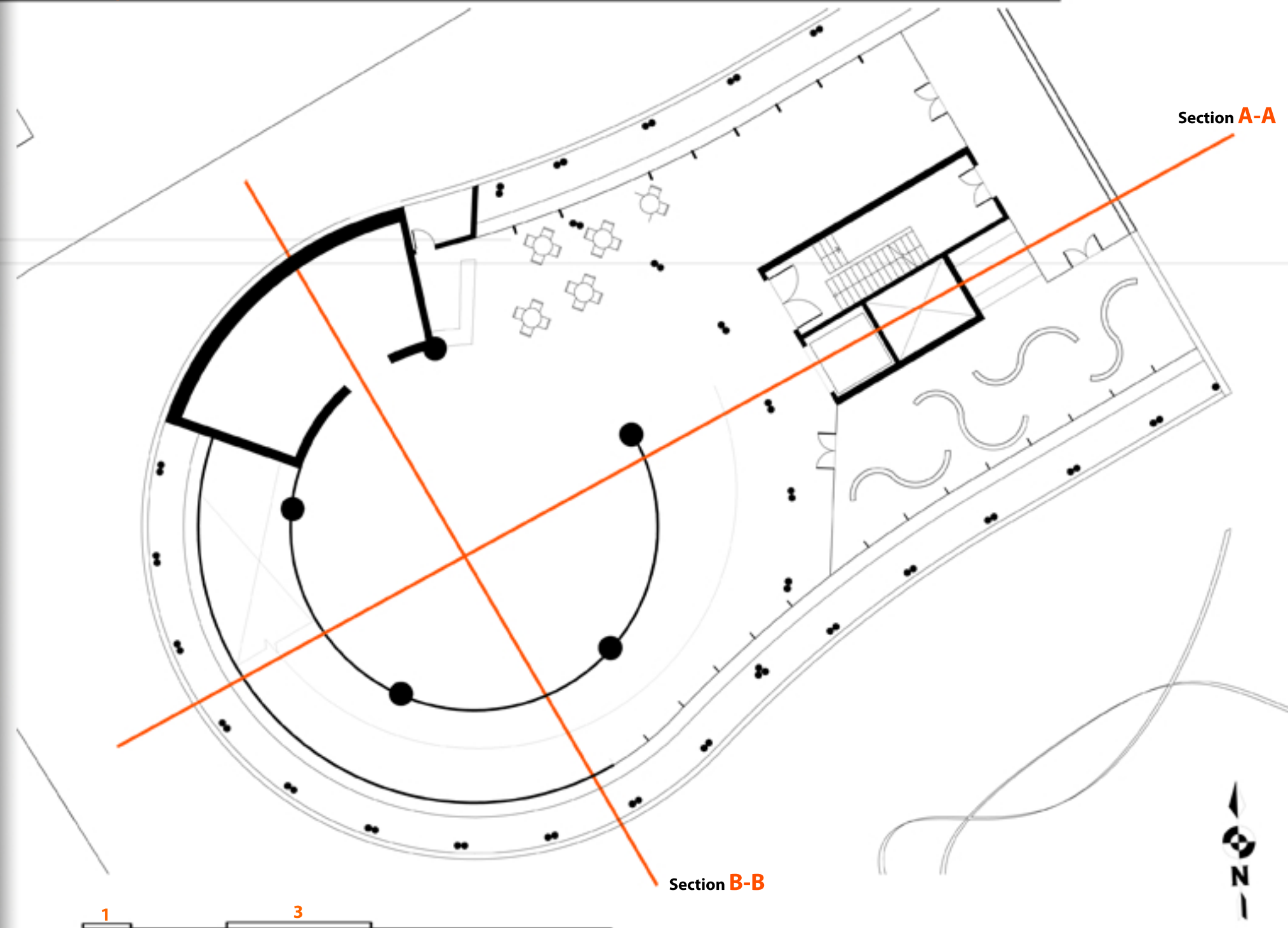




2	Index
4	Mann Island Photography Studio Main Gallery
6	Mann Island Master Plan
8	Mann Island Photography Studio Plans
10	Mann Island Photography Section B-B
12	Mann Island Elevation
14	Mann Island Hotel Exterior Night
16	Mann Island Hotel Plans
18	Middle Terrace House
20	Courtyard House
22	Underground House
24	Underground House

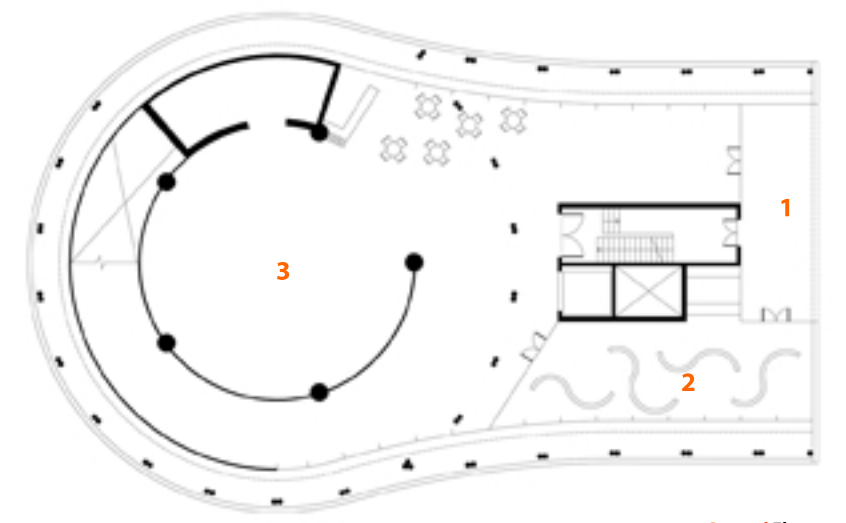
Cover	1
Index	3
Mann Island Photography Studio Perspective Section	5
Mann Island Photography Studio Ground Floor Plan	7
Mann Island Photography Studio Section A-A	9
Mann Island Photography Studio Details	11
Mann Island Elevation	13
Mann Island Hotel Exterior Day	15
Mann Island Hotel Plans	17
Middle Terrace House	19
Courtyard House	21
Underground House	23
Underground House	25



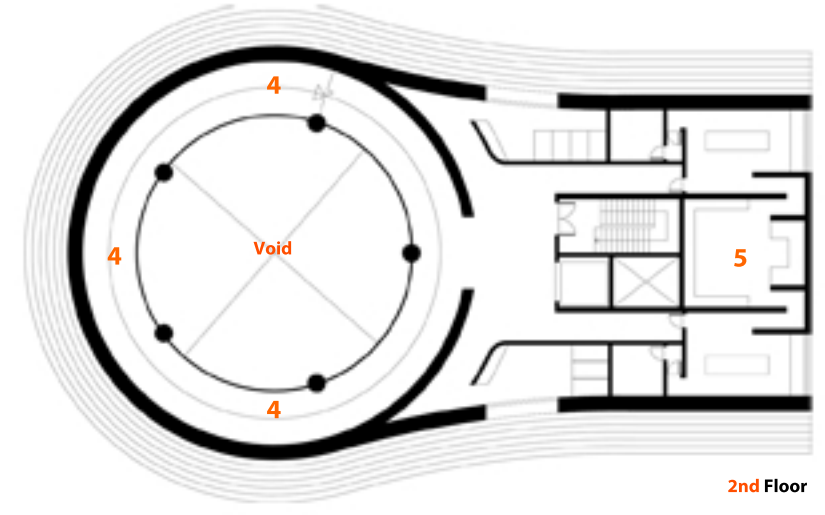


Section B-B

Section A-A



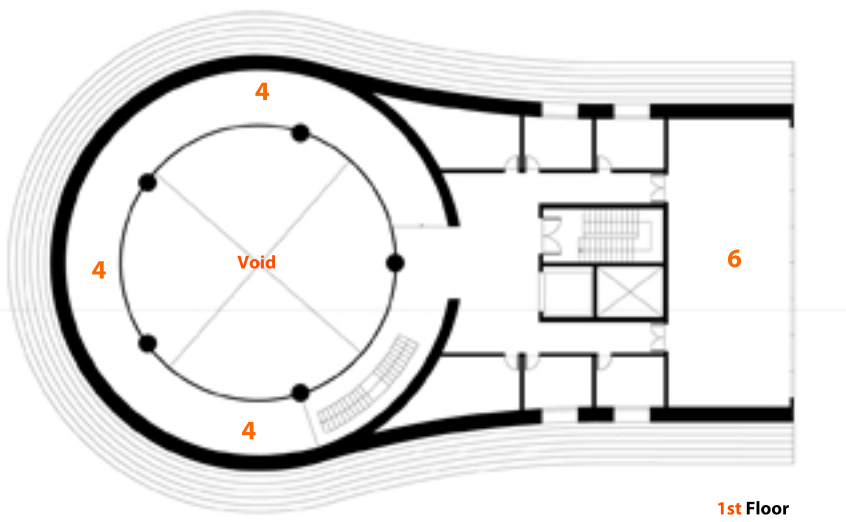
Ground Floor



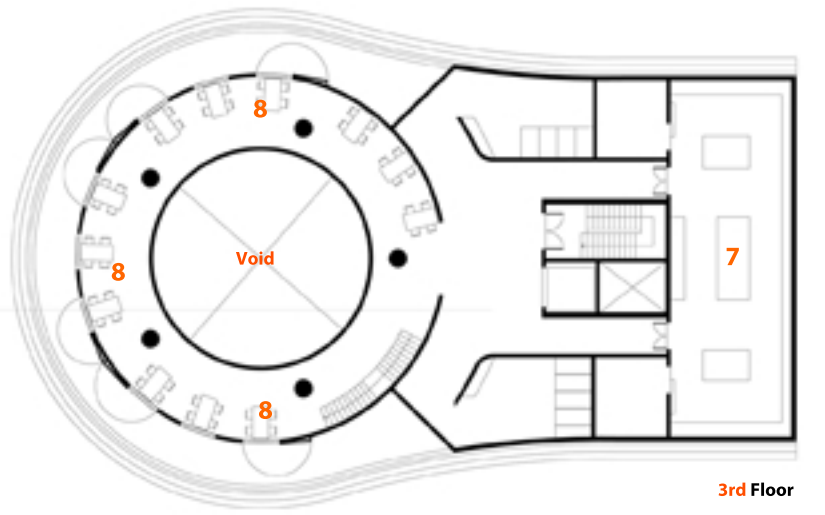
2nd Floor

Mann Island Photography Studio Plans

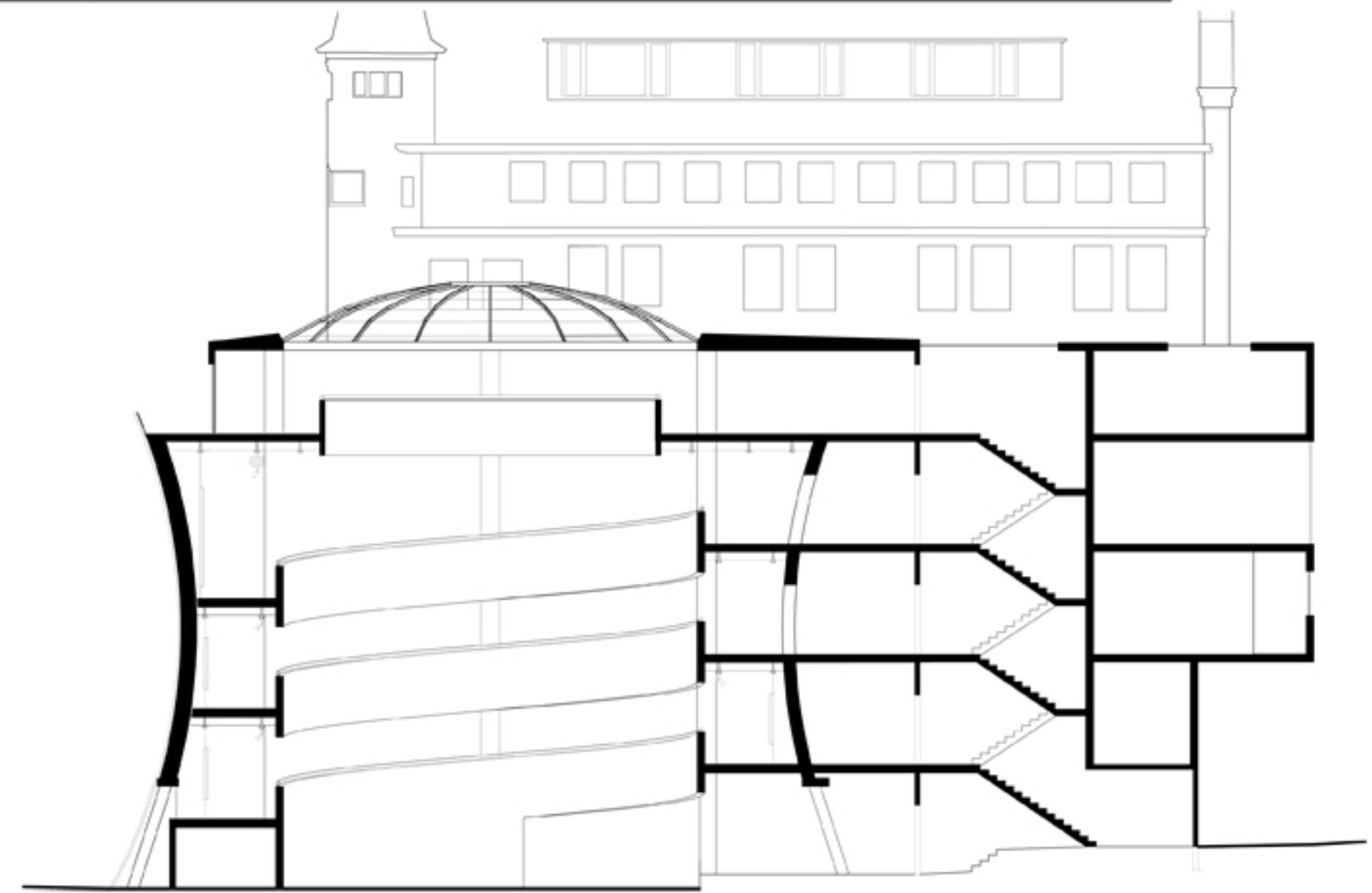
- 1. Entrance
- 2. Shop
- 3. Temporary Exhibition Space
- 4. Main Gallery
- 5. Dark Room
- 6. Studio
- 7. Kitchen
- 8. Restaurant



1st Floor



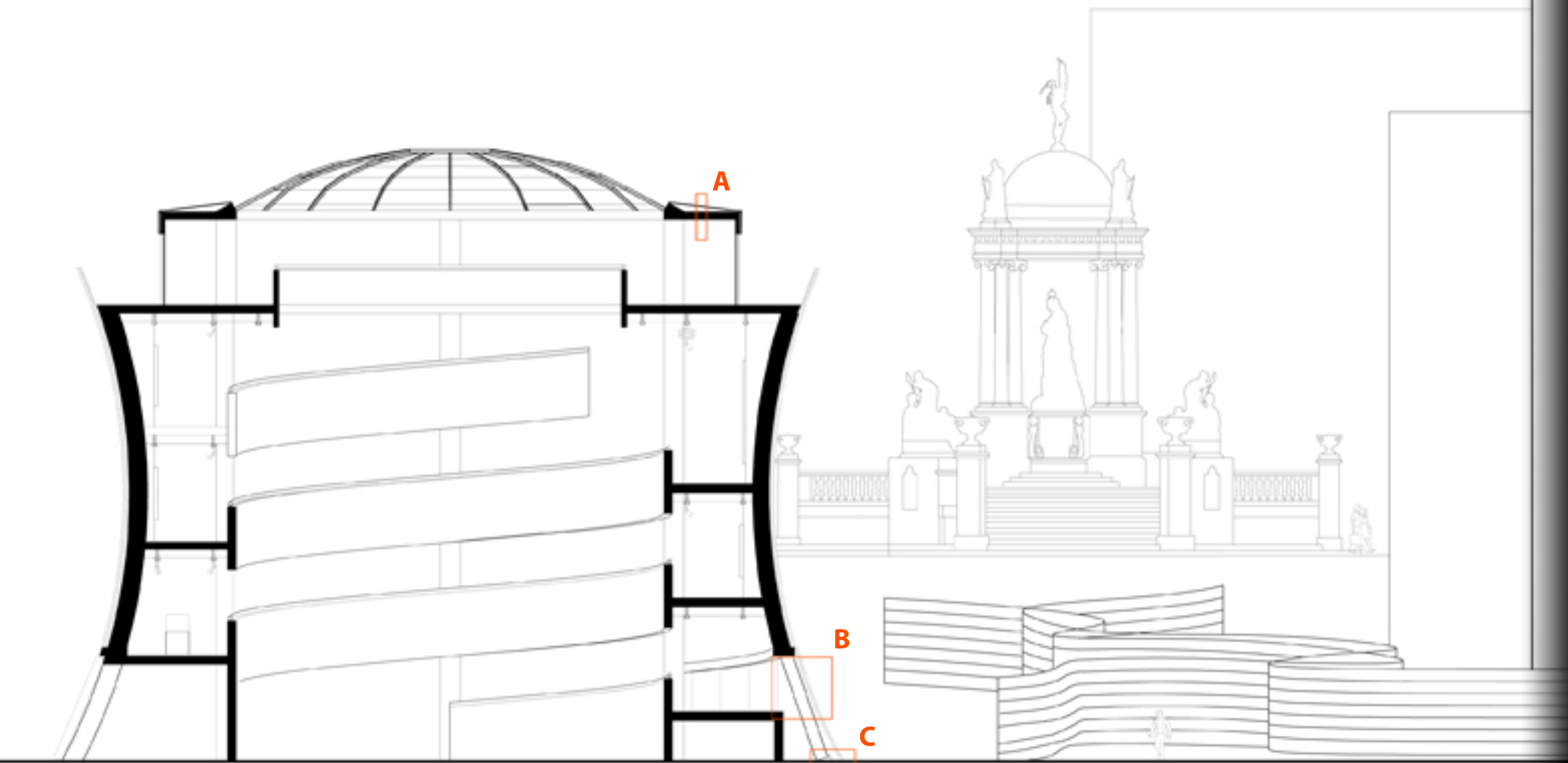
3rd Floor



Mann Island Photography Studio

Section A-A Scale 1:20

The main gallery is circular and designed to create a continuous exhibition of long exposure photographs starting with a one second exposure and ending with a one hour long exposure print. The exterior facade uses a complicated woven brick pattern which demonstrates the progression of the use of brick as a building material. This compliments the adjacent Albion House which was originally created using the most advanced brick techniques at the time.

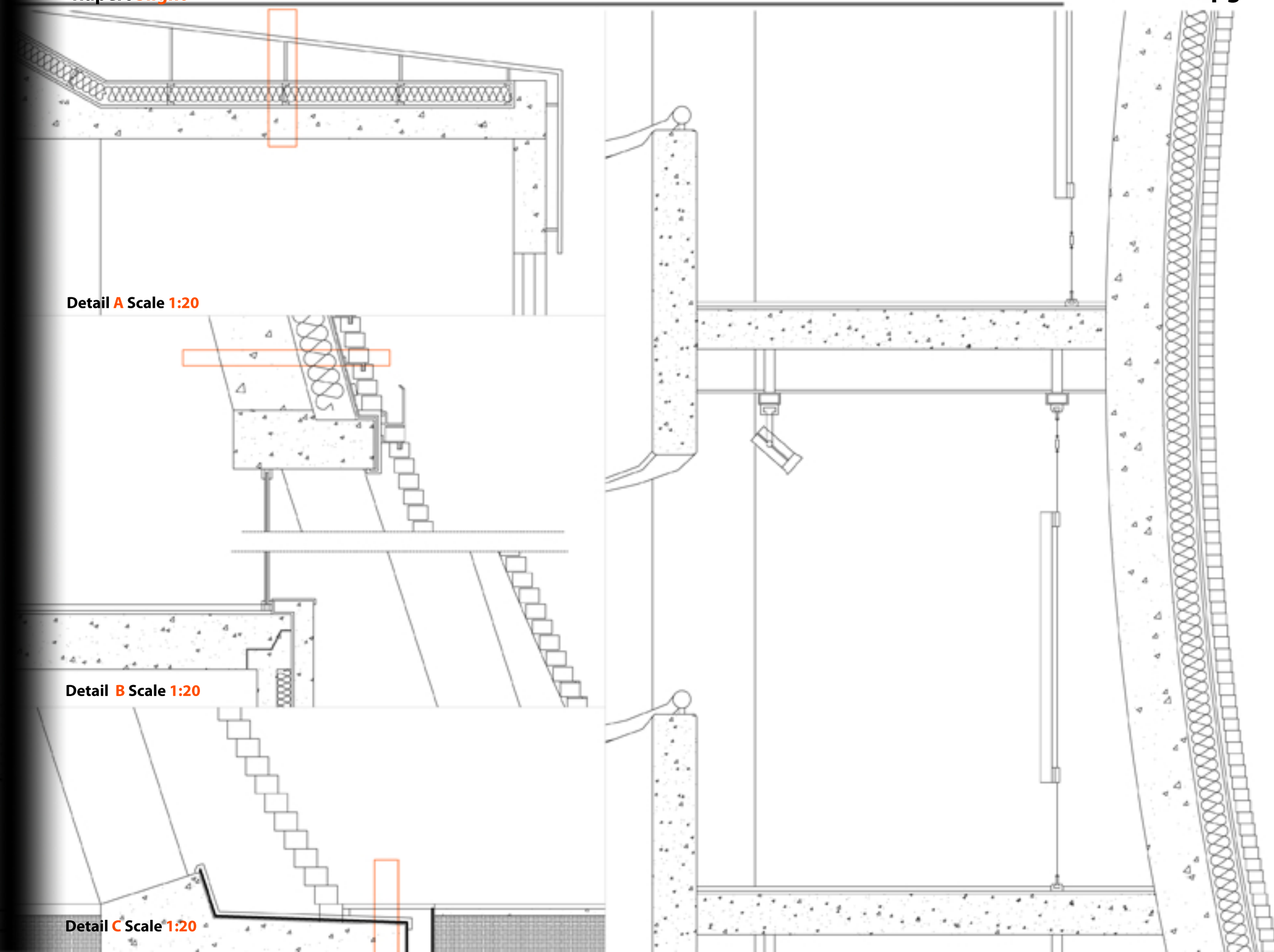


A
 10mm aluminum sheeting
 120mm steel box frame with
 C supports and insulating foam
 135mm reinforced concrete

B
 102mm woven brick cladding
 10mm insulating membrane
 20mm plywood board
 200mm insulating foam board
 400m reinforced concrete

C
 20mm steel drain
 10mm aluminum run off slope
 10mm insulating membrane
 20mm plywood board
 900mm concrete footing

Rupert Slight



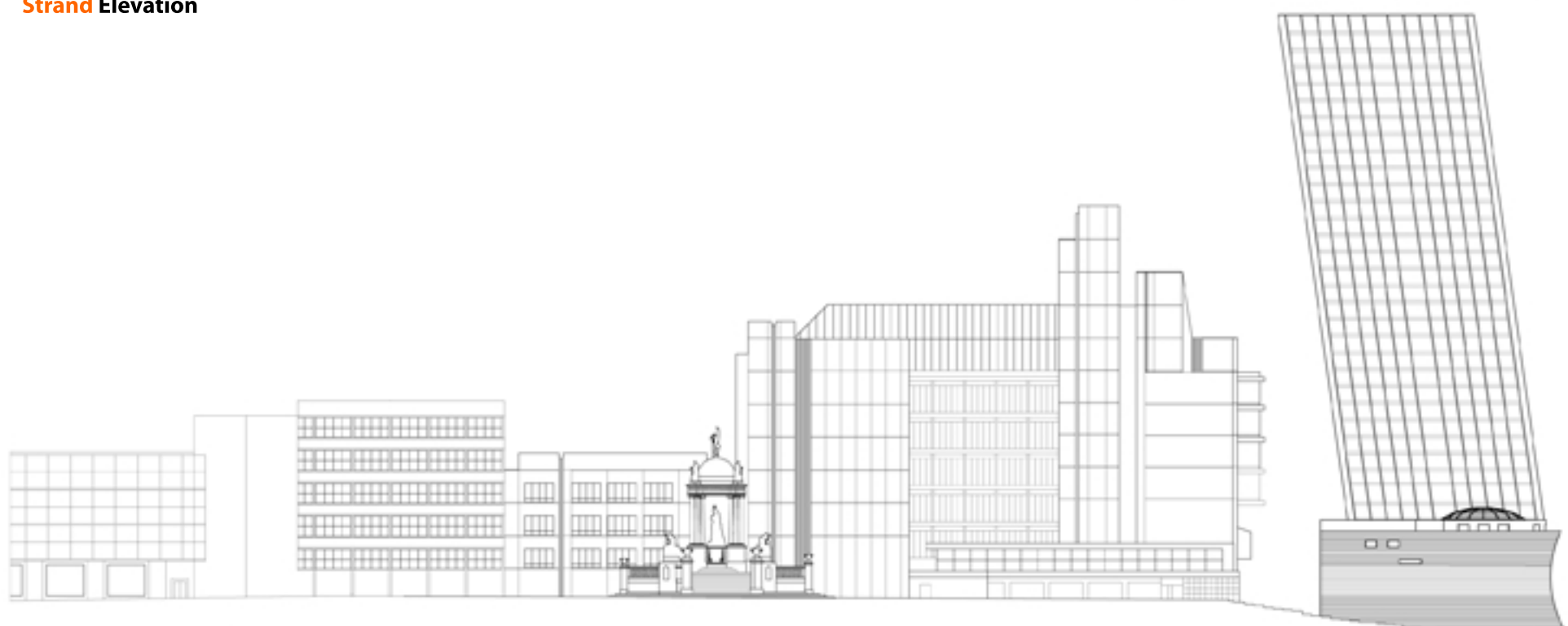
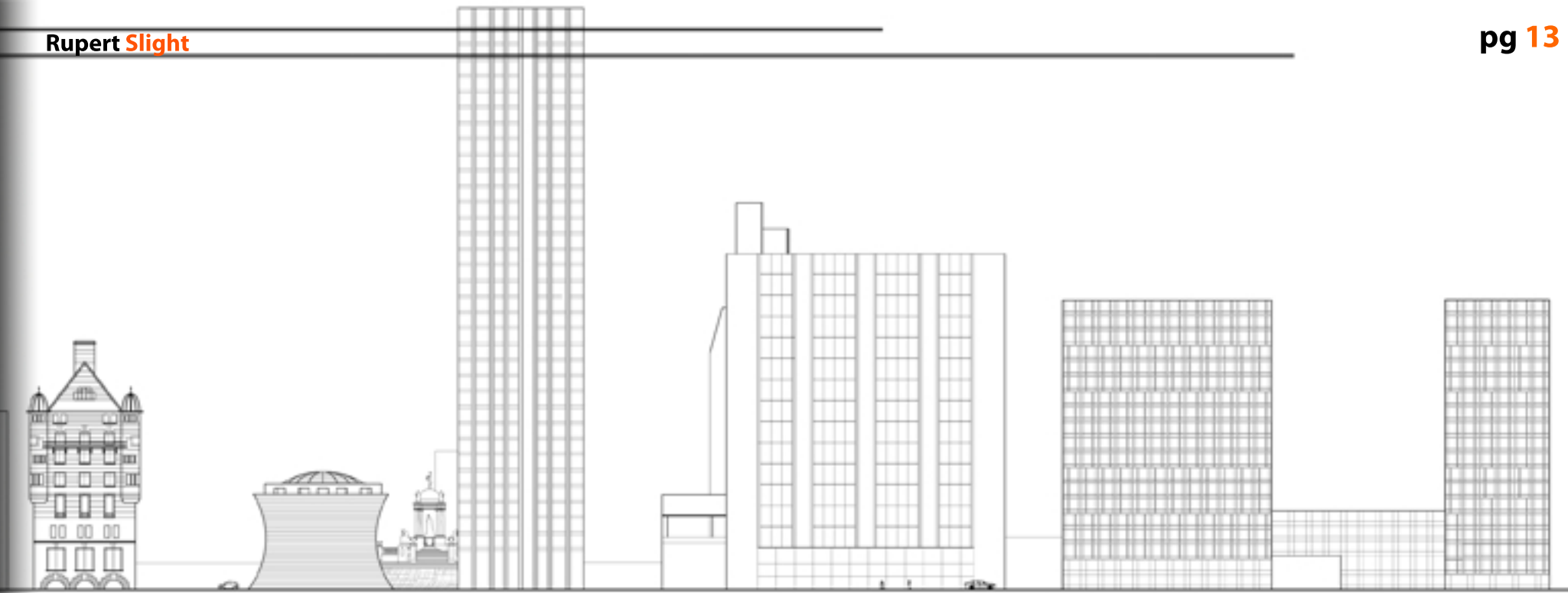
Detail A Scale 1:20

Detail B Scale 1:20

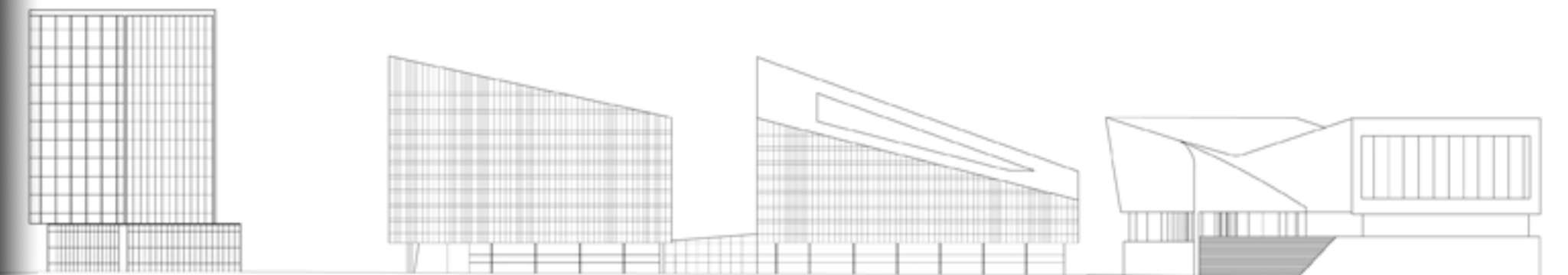
Detail C Scale 1:20



Strand Elevation



Rupert Slight



James Street Elevation

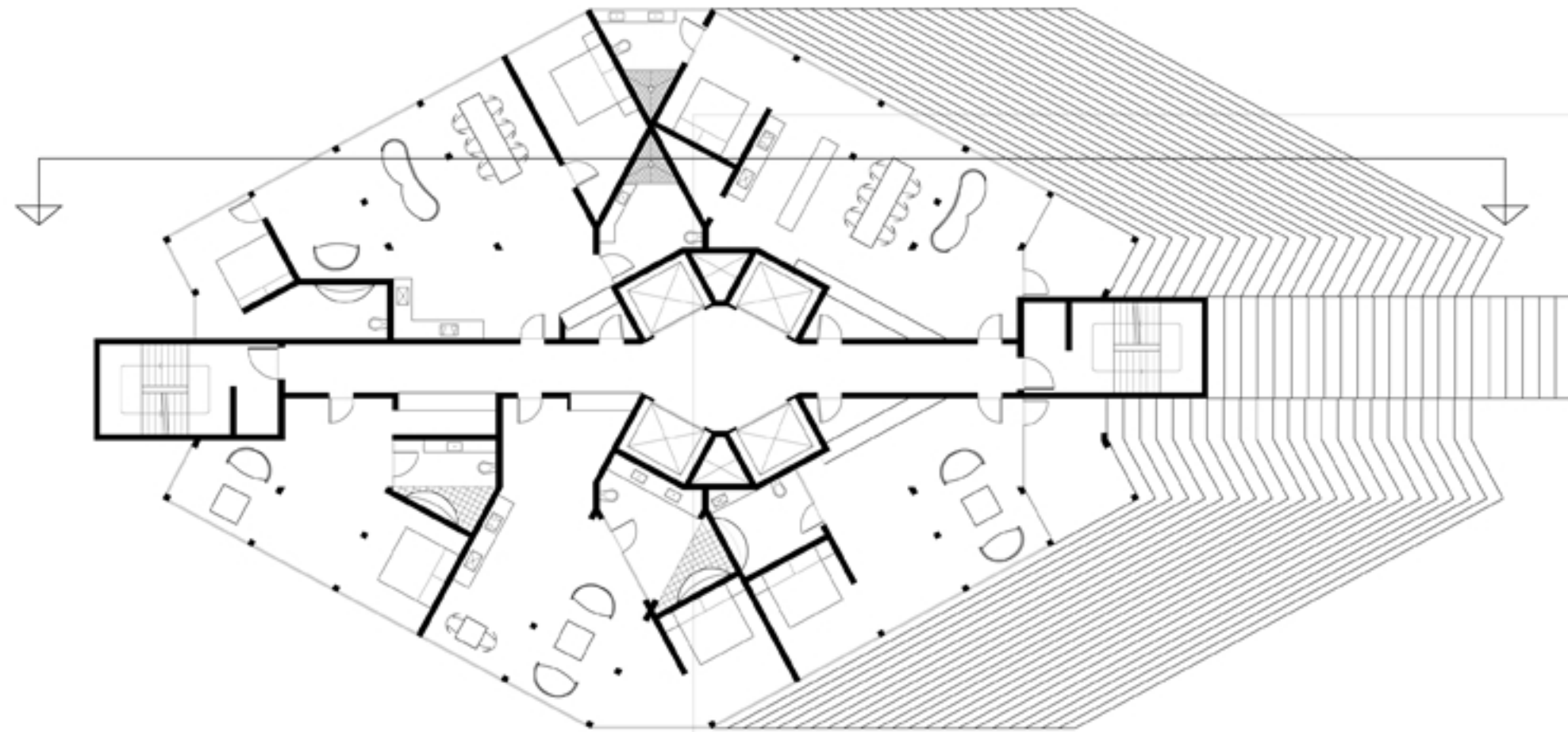


Mann Island Hotel

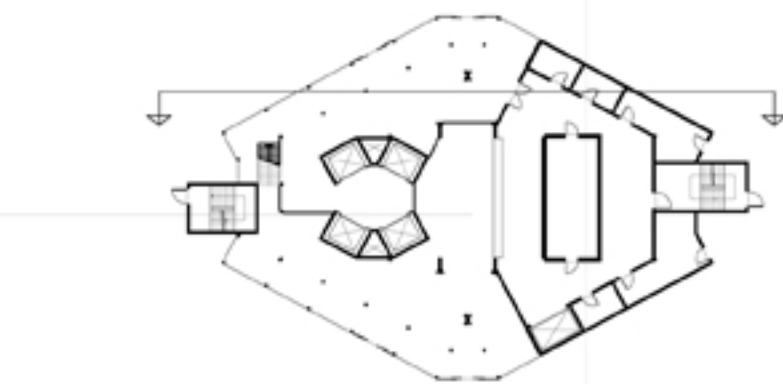
When designing this hotel we had to pick a theme. I chose entertainment as Liverpool thrives on its social events with shopping malls, restaurants and museums as well as its world famous music scene with the Cavern Club and the Liverpool Theater.



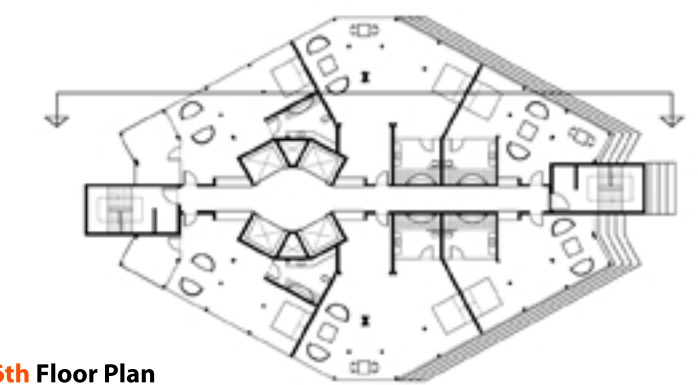
The building itself provides rooms for 200 guests and is a focal point for entertainment. The top floor hosts its own nightclub with 360 degree views of the city. The exterior facade is a glass and mesh design allowing the building to sit simply alongside the Grade II listed Cunard and Liver buildings during the day but at night it transforms into a glowing landmark using LED lighting located under the mesh skin that can be seen throughout the city.



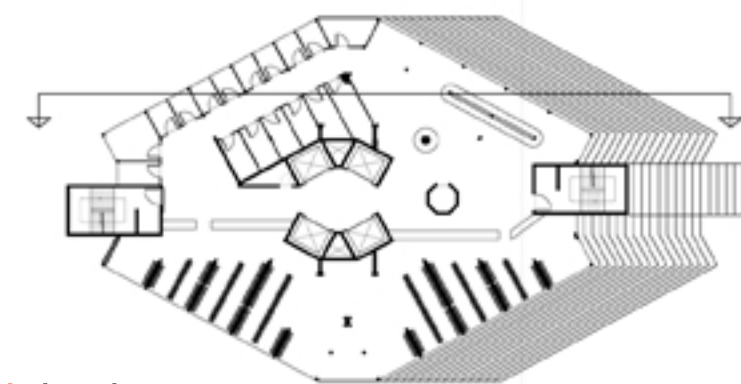
23rd Floor Plan



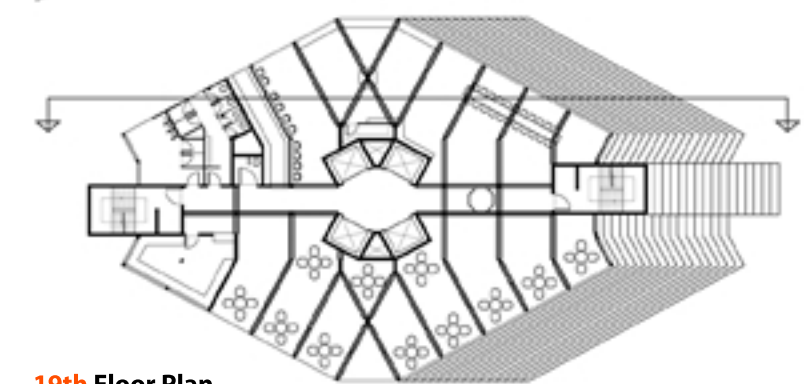
Ground Floor Plan



6th Floor Plan



18th Floor Plan



19th Floor Plan

To achieve the best experience for guests, the hotel offers a range of services to prepare for an evening of entertainment. These include an extensive wardrobe collection, hair and beauty salons. The hotel also has a deliver service with an extensive list of party games, food and drink. The hotel has a fashion presentation each evening which is held on the communal 19th floor with it's "exhibition" elevator.

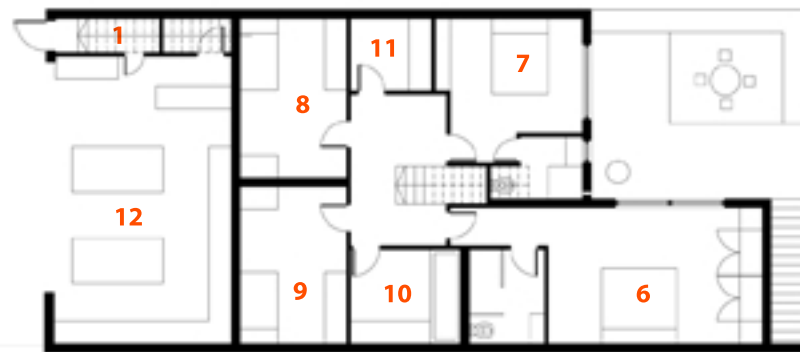
The unique feature of this hotel is the 18th and 19th floor and the connecting "exhibition" elevator. The 18th floor contains an extensive wardrobe of designer clothes available to guests to choose outfits from. The 19th floor is the central floor of this building as it is the floor where guests will meet at the beginning of the night to see what outfits have been chosen by their fellow guests before heading out for the evening. The guests make an entrance on this floor dressed in their finery via the exhibition elevator that links it with the changing rooms and outfit rental on the 18th floor below.



Middle Terrace House

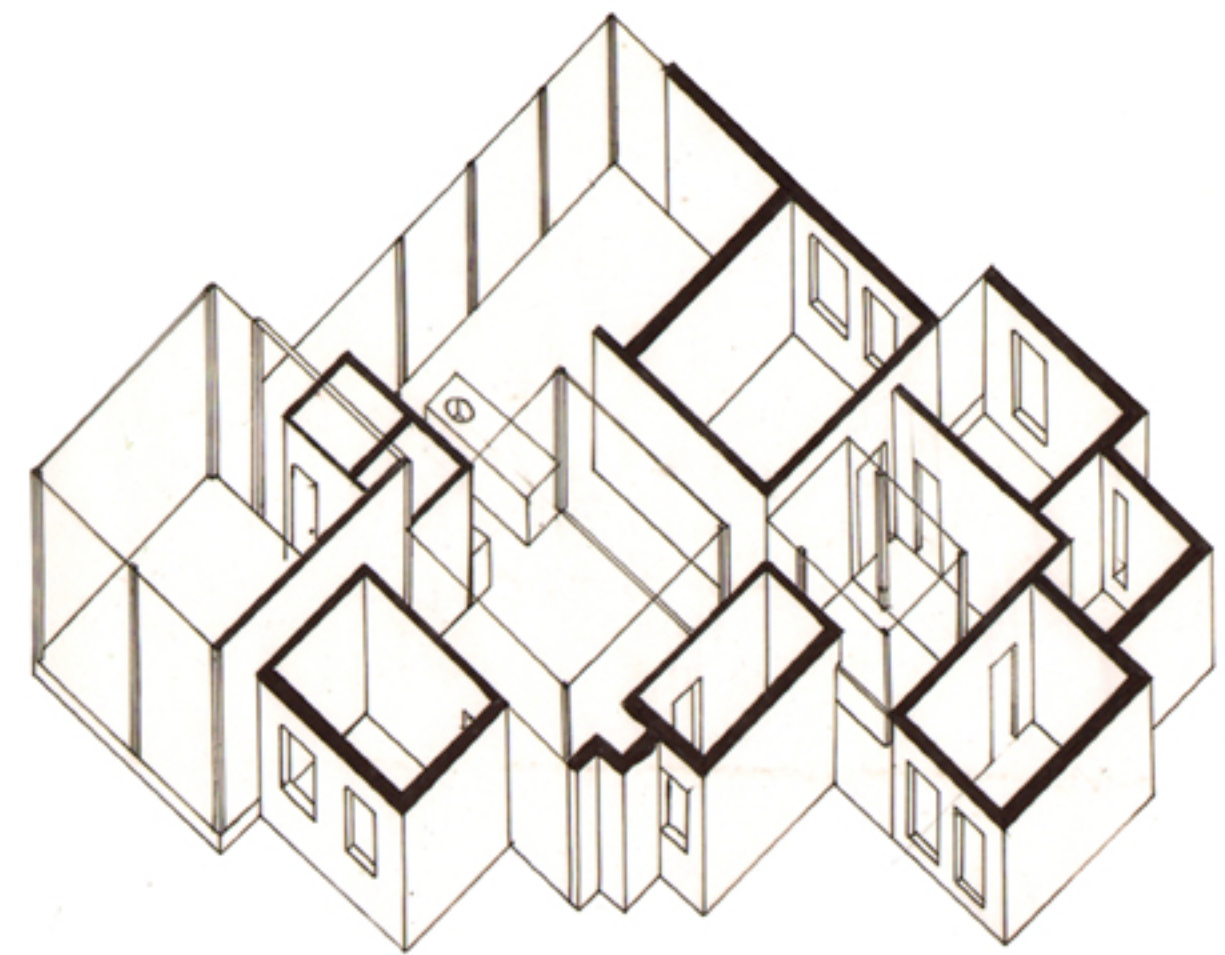
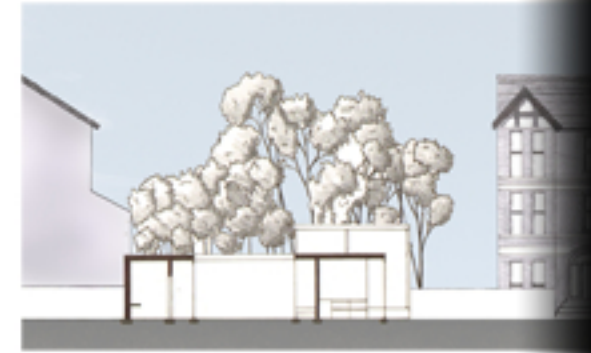
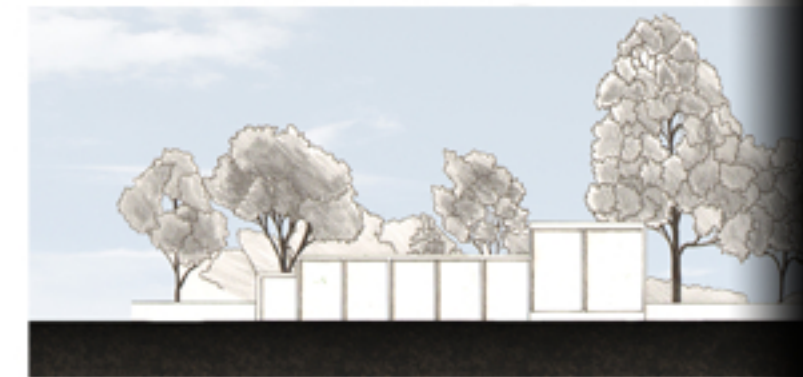
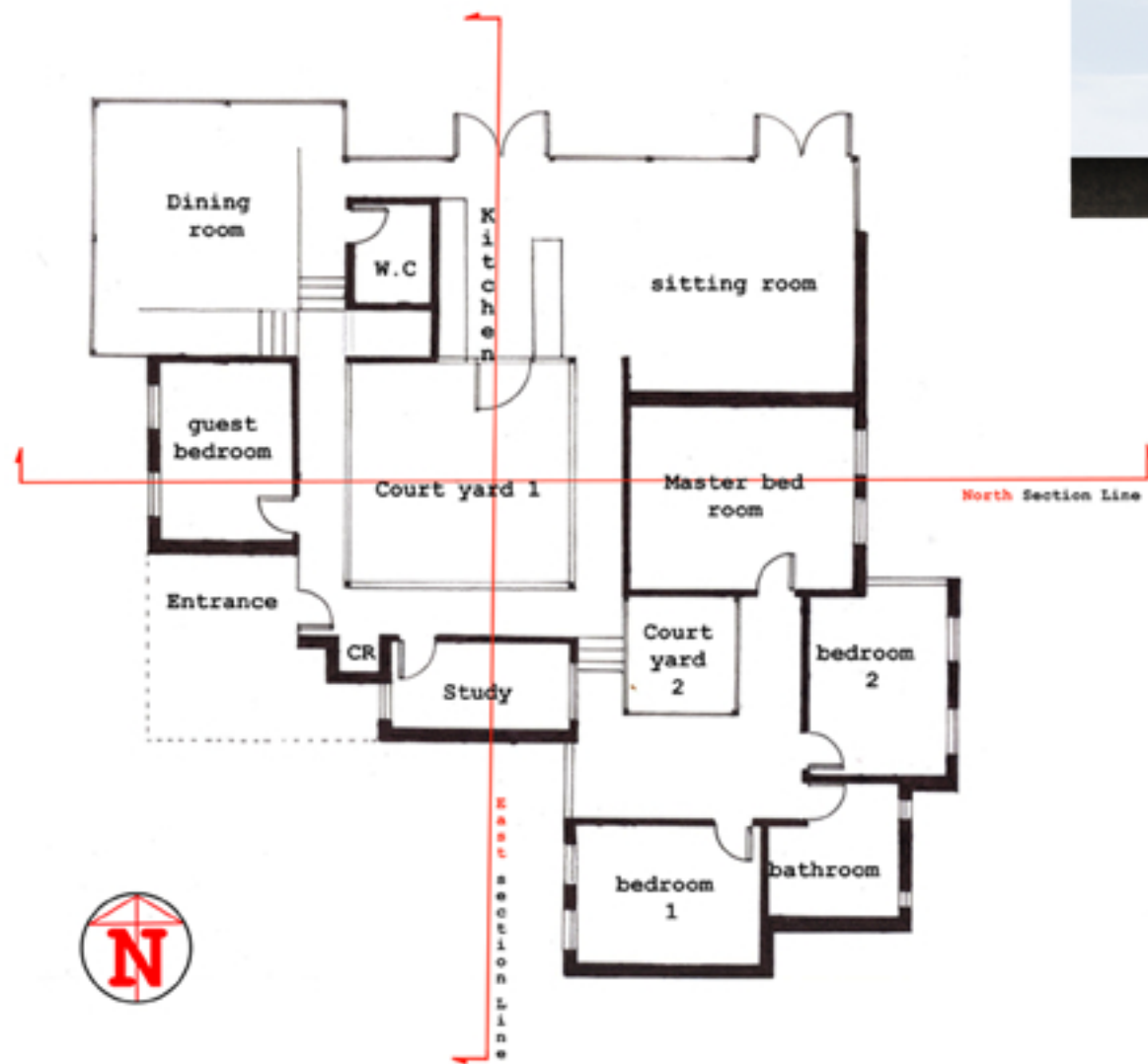
This design is a refurbishment of an old Victorian terrace house in the heart of Liverpool. The brief was to provide a modern home without creating an eyesore in the neighborhood. I achieved this by creating a large single plan space with natural light from nine large skylights on the South side of the building. At the same time I left the North elevation untouched.

The roof is supported by an oversized steel structure that works with modern industrial styling.



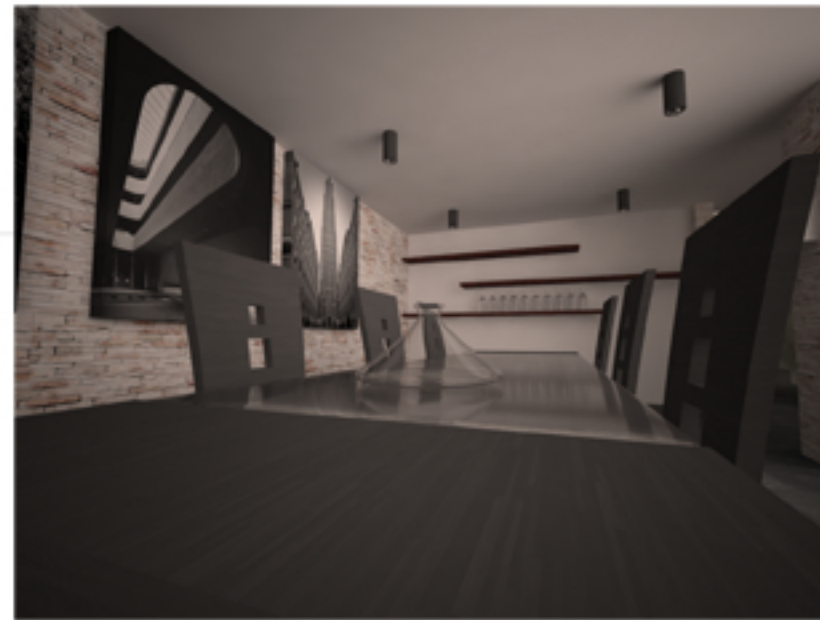
1. Entrance
2. Living room
3. Dinning room
4. Kitchen
5. Patio
6. Master bedroom
7. Guest Bedroom
8. Kids room 1
9. Kids room 2
10. Bathroom
11. Utility room
12. Shop





Courtyard House

This design was the first of three designs for this site, each with different criteria set for our third year studio work. Each of the three briefs had challenging criteria. The specific criteria for this house was that the building had to have a central courtyard with a glazed North elevation and a windowless South elevation.



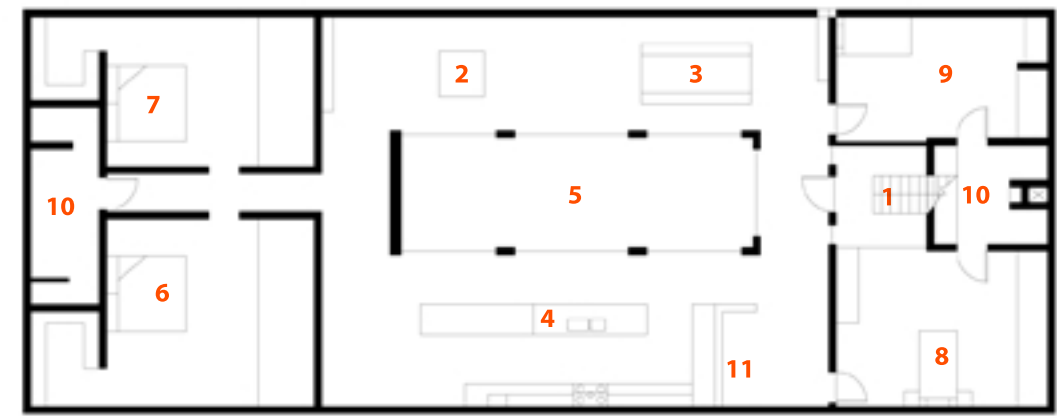
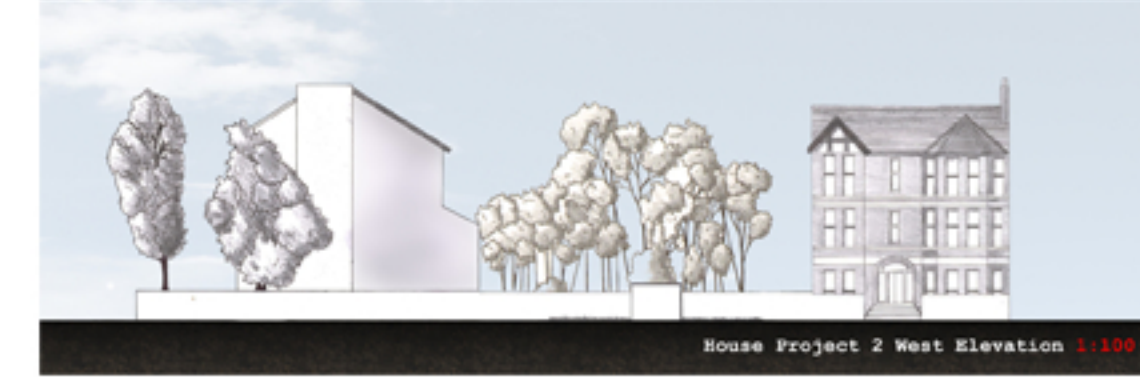
Underground House

This was the second of three house designs for this site. The specification for this brief was to have no living areas above ground as well as accommodating a family of four plus a guest room.

The main problem faced was including natural light and so I created three large light-wells to bring in as much natural light as possible.

The kitchen faces east so it receives as much morning sunlight with the siting and dining room located across the courtyard on the west side to take advantage of the evening light.

The house is designed in a modern style to increase the amount of light that can penetrate though the house.



- 1. Entrance
- 2. Living room
- 3. Dinning room
- 4. Kitchen
- 5. Patio
- 6. Master bedroom
- 7. Guest Bedroom
- 8. Kids room 1
- 9. Kids room 2
- 10. Bathroom
- 11. Utility room

